

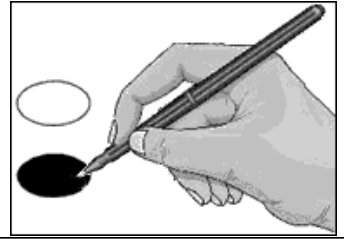
Sample Ballot
 New Hanover County, North Carolina
 November 3, 2020

B0004



BALLOT MARKING INSTRUCTIONS:

- A. With the marking device provided or a black ball point pen, completely fill in the oval to the left of each candidate or selection of your choice as shown.
- B. Where authorized, you may write in a candidate by filling in the oval and writing the name on the Write-in line.
- C. If you tear, deface or wrongly mark this ballot, return it to request a replacement.



FEDERAL OFFICES	STATE OFFICES	
President and Vice President of the United States (You may vote for ONE)	NC Governor (You may vote for ONE)	NC Commissioner of Labor (You may vote for ONE)
<input type="radio"/> Donald J. Trump <input type="radio"/> Michael R. Pence <small>Republican</small>	<input type="radio"/> Al Pisano <small>Constitution</small>	<input type="radio"/> Josh Dobson <small>Republican</small>
<input type="radio"/> Joseph R. Biden <input type="radio"/> Kamala D. Harris <small>Democrat</small>	<input type="radio"/> Roy Cooper <small>Democrat</small>	<input type="radio"/> Jessica Holmes <small>Democrat</small>
<input type="radio"/> Don Blankenship <input type="radio"/> William Mohr <small>Constitution</small>	NC Lieutenant Governor (You may vote for ONE)	NC Secretary of State (You may vote for ONE)
<input type="radio"/> Howie Hawkins <input type="radio"/> Angela Walker <small>Green</small>	<input type="radio"/> Mark Robinson <small>Republican</small>	<input type="radio"/> E.C. Sykes <small>Republican</small>
<input type="radio"/> Jo Jorgensen <input type="radio"/> Jeremy (Spike) Cohen <small>Libertarian</small>	<input type="radio"/> Yvonne Lewis Holley <small>Democrat</small>	<input type="radio"/> Elaine Marshall <small>Democrat</small>
<input type="radio"/> Write-in	NC Attorney General (You may vote for ONE)	NC Superintendent of Public Instruction (You may vote for ONE)
US Senate (You may vote for ONE)	<input type="radio"/> Jim O'Neill <small>Republican</small>	<input type="radio"/> Catherine Truitt <small>Republican</small>
<input type="radio"/> Thom Tillis <small>Republican</small>	<input type="radio"/> Josh Stein <small>Democrat</small>	<input type="radio"/> Jen Mangrum <small>Democrat</small>
<input type="radio"/> Shannon W. Bray <small>Libertarian</small>	NC Auditor (You may vote for ONE)	NC Treasurer (You may vote for ONE)
<input type="radio"/> Cal Cunningham <small>Democrat</small>	<input type="radio"/> Anthony Wayne (Tony) Street <small>Republican</small>	<input type="radio"/> Ronnie Chatterji <small>Democrat</small>
<input type="radio"/> Kevin E. Hayes <small>Constitution</small>	<input type="radio"/> Beth A. Wood <small>Democrat</small>	<input type="radio"/> Dale R. Folwell <small>Republican</small>
US House of Representatives District 7 (You may vote for ONE)	NC Commissioner of Agriculture (You may vote for ONE)	NC Supreme Court Chief Justice Seat 1 (You may vote for ONE)
<input type="radio"/> David Rouzer <small>Republican</small>	<input type="radio"/> Steve Troxler <small>Republican</small>	<input type="radio"/> Cheri Beasley <small>Democrat</small>
<input type="radio"/> Christopher M. Ward <small>Democrat</small>	<input type="radio"/> Jenna Wadsworth <small>Democrat</small>	<input type="radio"/> Paul Newby <small>Republican</small>
<input type="radio"/> Write-in	NC Commissioner of Insurance (You may vote for ONE)	NC Supreme Court Associate Justice Seat 2 (You may vote for ONE)
	<input type="radio"/> Mike Causey <small>Republican</small>	<input type="radio"/> Phil Berger, Jr. <small>Republican</small>
	<input type="radio"/> Wayne Goodwin <small>Democrat</small>	<input type="radio"/> Lucy Inman <small>Democrat</small>
- VOTE BOTH SIDES -		Continue Voting next side ➔
<small>North Carolina</small>		<small>Ballot Style B0004</small>

SAMPLE BALLOT
SAMPLE BALLOT
SAMPLE BALLOT
SAMPLE BALLOT
SAMPLE BALLOT
SAMPLE BALLOT
SAMPLE BALLOT
SAMPLE BALLOT
SAMPLE BALLOT
SAMPLE BALLOT
SAMPLE BALLOT
SAMPLE BALLOT

NC Supreme Court Associate Justice Seat 4 (You may vote for ONE)	NC House of Representatives District 20 (You may vote for ONE)	COUNTY OFFICES
<input type="radio"/> Tamara Barringer Republican	<input type="radio"/> Ted Davis, Jr. Republican	Board of Commissioners (You may vote for THREE)
<input type="radio"/> Mark Davis Democrat	<input type="radio"/> Adam Ericson Democrat	<input type="radio"/> Bill Rivenbark Republican
	DISTRICT OFFICES	<input type="radio"/> Skip Watkins Republican
NC Court of Appeals Judge Seat 4 (You may vote for ONE)	NC District Court Judge District 5 Seat 5 (You may vote for ONE)	<input type="radio"/> Jonathan Barfield, Jr. Democrat
<input type="radio"/> Tricia Shields Democrat		<input type="radio"/> Leslie Cohen Democrat
<input type="radio"/> April C. Wood Republican	<input type="radio"/> J.H. Corpening II Democrat	<input type="radio"/> Deb Hays Republican
		<input type="radio"/> Kyle Horton Democrat
NC Court of Appeals Judge Seat 5 (You may vote for ONE)	NC District Court Judge District 5 Seat 6 (You may vote for ONE)	Board of Education (You may vote for THREE)
<input type="radio"/> Lora Christine Cubbage Democrat		<input type="radio"/> Stephanie Walker Democrat
<input type="radio"/> Fred Gore Republican	<input type="radio"/> Richard Russell Davis Democrat	<input type="radio"/> Pete Wildeboer Republican
		<input type="radio"/> Stephanie Kraybill Republican
NC Court of Appeals Judge Seat 6 (You may vote for ONE)	NC District Court Judge District 5 Seat 7 (You may vote for ONE)	<input type="radio"/> Tony McGhee Republican
<input type="radio"/> Gray Styers Democrat		<input type="radio"/> Hugh McManus Democrat
<input type="radio"/> Chris Dillon Republican	<input type="radio"/> Jeffrey Evan Noecker Democrat	<input type="radio"/> Chris Meek Democrat
		Register of Deeds (You may vote for ONE)
NC Court of Appeals Judge Seat 7 (You may vote for ONE)	NC District Court Judge District 5 Seat 8 (You may vote for ONE)	<input type="radio"/> Tammy T. Beasley Republican
<input type="radio"/> Reuben F. Young Democrat		<input type="radio"/> Clayton Hamerski Democrat
<input type="radio"/> Jeff Carpenter Republican	<input type="radio"/> Sandra Alice Ray Republican	<input type="radio"/> Peter McClain Green
		NONPARTISAN OFFICES
NC Court of Appeals Judge Seat 13 (You may vote for ONE)	NC District Court Judge District 5 Seat 9 (You may vote for ONE)	Soil and Water Conservation District Supervisor (You may vote for ONE)
<input type="radio"/> Chris Brook Democrat		<input type="radio"/> Jeremy Tominack
<input type="radio"/> Jefferson G. Griffin Republican	<input type="radio"/> Robin Wicks Robinson Democrat	<input type="radio"/> Robert F. Allen, Sr.
		<input type="radio"/> Matthew Collogan
NC State Senate District 9 (You may vote for ONE)		<input type="radio"/> David Dowdy
<input type="radio"/> Harper Peterson Democrat		<input type="radio"/> _____ Write-in
<input type="radio"/> Michael Lee Republican		End of Ballot
	- VOTE BOTH SIDES -	
	North Carolina	Ballot Style B0004

SAMPLE BALLOT
SAMPLE BALLOT
SAMPLE BALLOT
SAMPLE BALLOT
SAMPLE BALLOT
SAMPLE BALLOT
SAMPLE BALLOT
SAMPLE BALLOT
SAMPLE BALLOT
SAMPLE BALLOT
SAMPLE BALLOT
SAMPLE BALLOT