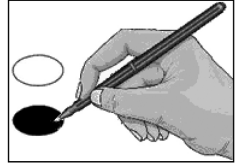


SAMPLE BALLOT

Paid for by the New Hanover County Republican Party

BALLOT MARKING INSTRUCTIONS:

- A. With the marking device provided or a black ball point pen, completely fill in the oval to the left of each candidate or selection of your choice as shown.
- B. Where authorized, you may write in a candidate by filling in the oval and writing the name on the Write-in line.
- C. If you tear, deface or wrongly mark this ballot, return it to request a replacement.



FEDERAL OFFICES

STATE OFFICES

NC Commissioner of Labor (You may vote for ONE)

- ☒ **Josh Dobson**
Republican
- ☐ **Jessica Holmes**
Democrat

NC Secretary of State (You may vote for ONE)

- ☒ **E.C. Sykes**
Republican
- ☐ **Elaine Marshall**
Democrat

NC Superintendent of Public Instruction (You may vote for ONE)

- ☒ **Catherine Truitt**
Republican
- ☐ **Jen Mangrum**
Democrat

NC Treasurer (You may vote for ONE)

- ☐ **Ronnie Chatterji**
Democrat
- ☒ **Dale R. Folwell**
Republican

NC Supreme Court Chief Justice Seat 1 (You may vote for ONE)

- ☐ **Cheri Beasley**
Democrat
- ☒ **Paul Newby**
Republican

NC Supreme Court Associate Justice Seat 2 (You may vote for ONE)

- ☒ **Phil Berger, Jr.**
Republican
- ☐ **Lucy Inman**
Democrat

Continue Voting
next side



- VOTE BOTH SIDES -

North Carolina

President and Vice President of the United States (You may vote for ONE)

- ☒ **Donald J. Trump**
Michael R. Pence
Republican

- ☐ **Joseph R. Biden**
Kamala D. Harris
Democrat

- ☐ **Don Blankenship**
William Mohr
Constitution

- ☐ **Howie Hawkins**
Angela Walker
Green

- ☐ **Jo Jorgensen**
Jeremy (Spike) Cohen
Libertarian

☐ Write-in

US Senate (You may vote for ONE)

- ☒ **Thom Tillis**
Republican
- ☐ **Shannon W. Bray**
Libertarian
- ☐ **Cal Cunningham**
Democrat
- ☐ **Kevin E. Hayes**
Constitution

US House of Representatives District 7 (You may vote for ONE)

- ☒ **David Rouzer**
Republican
- ☐ **Christopher M. Ward**
Democrat

☐ Write-in

NC Governor (You may vote for ONE)

- ☐ **Al Pisano**
Constitution
- ☐ **Roy Cooper**
Democrat
- ☐ **Steven J. DiFiore**
Libertarian
- ☒ **Dan Forest**
Republican

NC Lieutenant Governor (You may vote for ONE)

- ☒ **Mark Robinson**
Republican
- ☐ **Yvonne Lewis Holley**
Democrat

NC Attorney General (You may vote for ONE)

- ☒ **Jim O'Neill**
Republican
- ☐ **Josh Stein**
Democrat

NC Auditor (You may vote for ONE)

- ☒ **Anthony Wayne (Tony) Street**
Republican
- ☐ **Beth A. Wood**
Democrat

NC Commissioner of Agriculture (You may vote for ONE)

- ☒ **Steve Troxler**
Republican
- ☐ **Jenna Wadsworth**
Democrat

NC Commissioner of Insurance (You may vote for ONE)

- ☒ **Mike Causey**
Republican
- ☐ **Wayne Goodwin**
Democrat

SAMPLE BALLOT

SAMPLE BALLOT

This SAMPLE BALLOT was paid for by the New Hanover County Republican Party		
<div>NC Supreme Court Associate Justice Seat 4 (You may vote for ONE)</div> <div><div><input checked="" type="radio"/> Tamara Barringer Republican</div><div><input type="radio"/> Mark Davis Democrat</div></div>	<div>NC House of Representatives District 18 (You may vote for ONE)</div> <div><div><input type="radio"/> Deb Butler Democrat</div><div><input checked="" type="radio"/> Warren Kennedy Republican</div></div>	<div>COUNTY OFFICES</div> <div>Board of Commissioners (You may vote for THREE)</div> <div><div><input checked="" type="radio"/> Bill Rivenbark Republican</div><div><input checked="" type="radio"/> Skip Watkins Republican</div><div><input type="radio"/> Jonathan Barfield, Jr. Democrat</div><div><input type="radio"/> Leslie Cohen Democrat</div><div><input checked="" type="radio"/> Deb Hays Republican</div><div><input type="radio"/> Kyle Horton Democrat</div></div>
<div>NC Court of Appeals Judge Seat 4 (You may vote for ONE)</div> <div><div><input type="radio"/> Tricia Shields Democrat</div><div><input checked="" type="radio"/> April C. Wood Republican</div></div>	<div>NC District Court Judge District 5 Seat 5 (You may vote for ONE)</div> <div><div><input type="radio"/> J.H. Corpening II Democrat</div></div>	
<div>NC Court of Appeals Judge Seat 5 (You may vote for ONE)</div> <div><div><input type="radio"/> Lora Christine Cubbage Democrat</div><div><input checked="" type="radio"/> Fred Gore Republican</div></div>	<div>NC District Court Judge District 5 Seat 6 (You may vote for ONE)</div> <div><div><input type="radio"/> Richard Russell Davis Democrat</div></div>	<div>Board of Education (You may vote for THREE)</div> <div><div><input type="radio"/> Stephanie Walker Democrat</div><div><input checked="" type="radio"/> Pete Wildeboer Republican</div><div><input checked="" type="radio"/> Stephanie Kraybill Republican</div><div><input checked="" type="radio"/> Tony McGhee Republican</div><div><input type="radio"/> Hugh McManus Democrat</div><div><input type="radio"/> Chris Meek Democrat</div></div>
<div>NC Court of Appeals Judge Seat 6 (You may vote for ONE)</div> <div><div><input type="radio"/> Gray Styers Democrat</div><div><input checked="" type="radio"/> Chris Dillon Republican</div></div>	<div>NC District Court Judge District 5 Seat 7 (You may vote for ONE)</div> <div><div><input type="radio"/> Jeffrey Evan Noecker Democrat</div></div>	<div>Register of Deeds (You may vote for ONE)</div> <div><div><input checked="" type="radio"/> Tammy T. Beasley Republican</div><div><input type="radio"/> Clayton Hamerski Democrat</div><div><input type="radio"/> Peter McClain Green</div></div>
<div>NC Court of Appeals Judge Seat 7 (You may vote for ONE)</div> <div><div><input type="radio"/> Reuben F. Young Democrat</div><div><input checked="" type="radio"/> Jeff Carpenter Republican</div></div>	<div>NC District Court Judge District 5 Seat 8 (You may vote for ONE)</div> <div><div><input checked="" type="radio"/> Sandra Alice Ray Republican</div></div>	<div>NONPARTISAN OFFICES</div> <div>Soil and Water Conservation District Supervisor (You may vote for ONE)</div> <div><div><input type="radio"/> Jeremy Tominack</div><div><input checked="" type="radio"/> Robert F. Allen, Sr.</div><div><input type="radio"/> Matthew Collogan</div><div><input type="radio"/> David Dowdy</div><div><input type="radio"/> Write-in</div></div>
<div>NC Court of Appeals Judge Seat 13 (You may vote for ONE)</div> <div><div><input type="radio"/> Chris Brook Democrat</div><div><input checked="" type="radio"/> Jefferson G. Griffin Republican</div></div>	<div>NC District Court Judge District 5 Seat 9 (You may vote for ONE)</div> <div><div><input type="radio"/> Robin Wicks Robinson Democrat</div></div>	
<div>NC State Senate District 9 (You may vote for ONE)</div> <div><div><input type="radio"/> Harper Peterson Democrat</div><div><input checked="" type="radio"/> Michael Lee Republican</div></div>		<div>End of Ballot</div> <div>This marked sample ballot is authorized by the New Hanover County GOP. This document is not an official ballot and has not been produced by the New Hanover County Board of Elections.</div>
SAMPLE BALLOT	- VOTE BOTH SIDES - North Carolina	SAMPLE BALLOT